

- Notes:
- Materials: Housing is hermoplastic UL94V-0
Terminals is Copper Alloy ($t=0.15i\pm0.01$ mm)
 - Plating: Nickel 1.27 um min. over all
Terminal Gold Flash all over Gold 0.076 um min.
on contact point
 - Application PCB thickness is 1.20i \pm 0.10 mm
 - Tru-position is 0.10 mm max..
 - Coplanarity is 0.10 mm max..
 - RoHS Compliant Product.
 - PRODUCT SPECIFICATION REFER TO 88881-XXXX
 - DRAWING PACKAGING REFER TO
88990-XXXX-TRP OR 88990-XXX5-TRP

P/N Legend

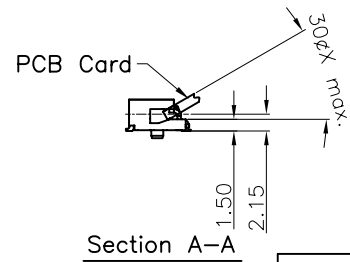
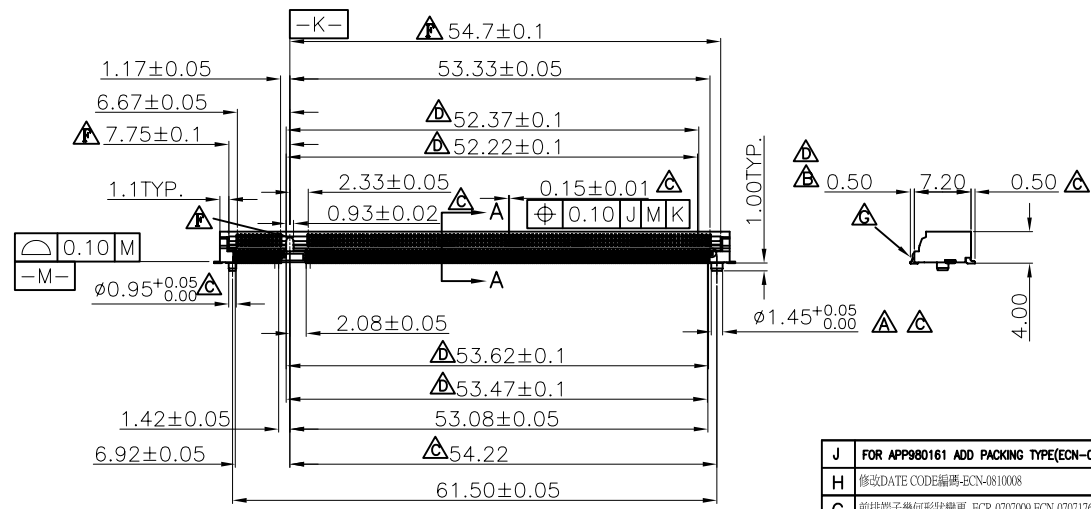
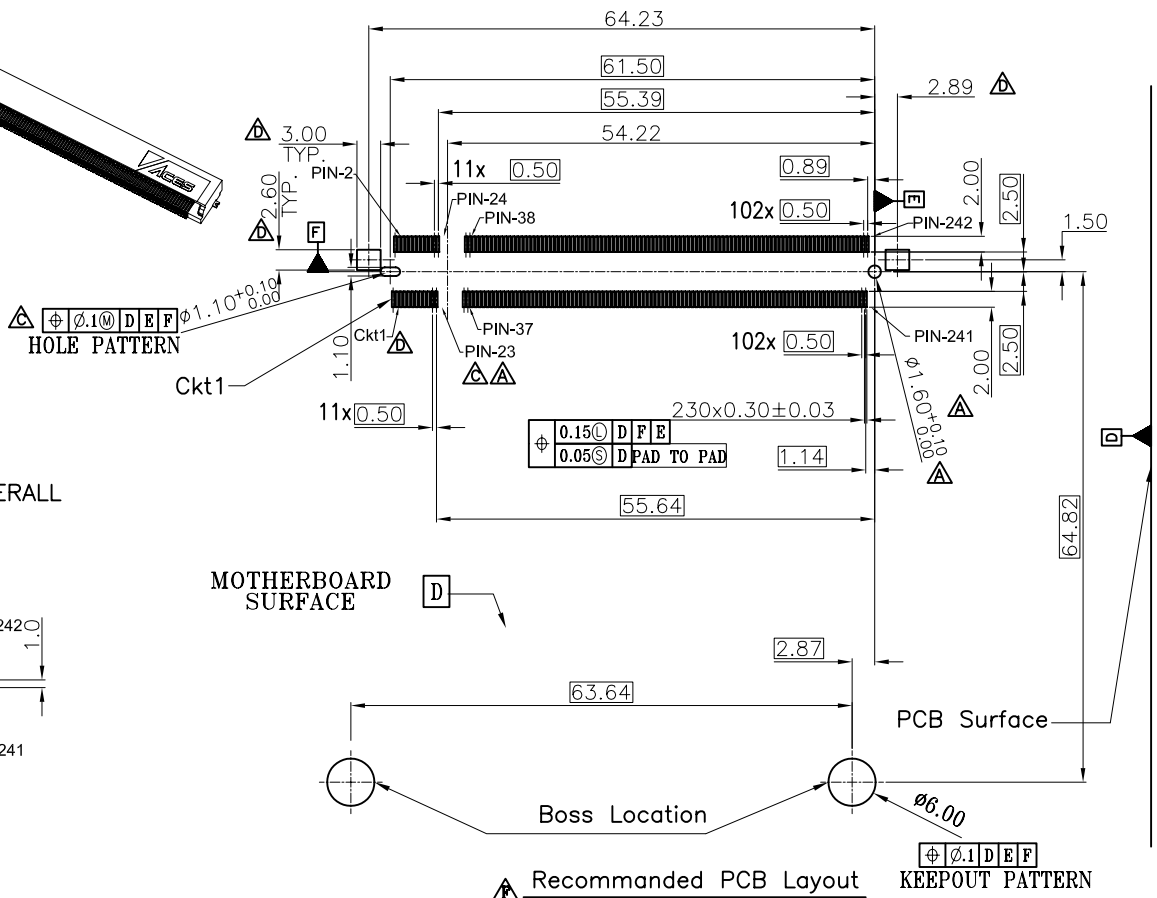
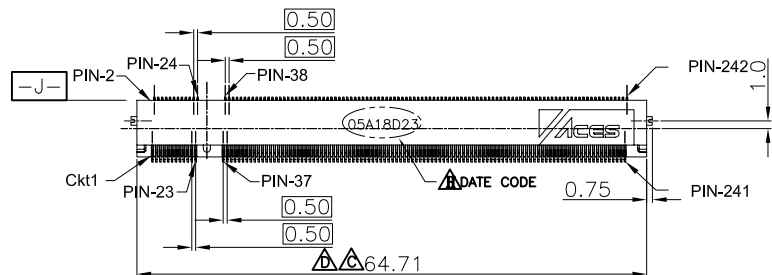
88990-2D X X-XXX

230 CKTS
PACKING
2:TRAY
0:TAPE & REEL

| XXX | PACKING |
|-----|----------------|
| 000 | 88990-XXXX-TRP |
| 051 | 88990-XXX5-TRP |

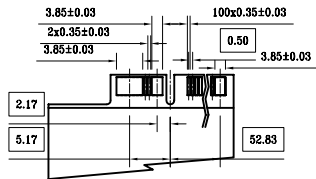
PLATING
8: SEE NOTES

M: PLATING 30u"~80u"NICKEL PLATING OVERALL
3u" GOLD ON CONTACT AND SOLDER
FOR SELECTVENESS PLATING

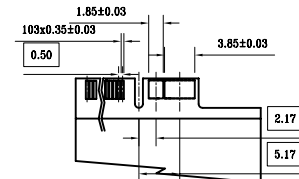


| REV | REVISION DESCRIPTION | DATE | SIGNATURE |
|-----|---|----------|-----------|
| J | FOR APP980161 ADD PACKING TYPE(ECN-0908186) | 09/08/27 | ANDREW |
| H | 修改DATE CODE編碼-ECN-0810008 | 08/11/08 | Bernie |
| G | 前排端子幾何形狀變更 ECR-0707009 ECN-0707176 | 07/07/26 | Bernie |

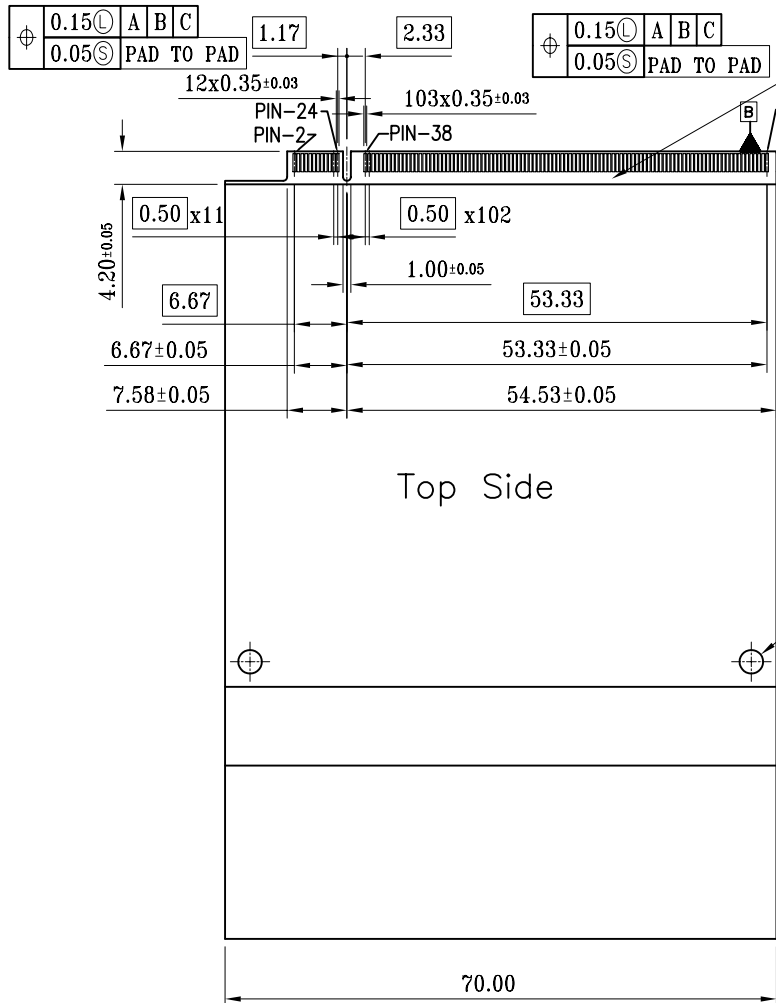
| | | |
|--|--|--|
| <p>一般公差 TOLERANCES X ±0.5 XX ±0.15 X ±0.25 XXX ±0.1 ANGLES ±2°</p> | <p>宏致電子股份有限公司 Aces Electronic Co.,Ltd.</p> | |
| <p>檢驗尺寸標示 SYMBOLS ⊕ ⊗ INDICATE CLASSIFICATION DIMENSION</p> | <p>品名 (TITLE) MM 230 pins 0.5mm pitch Edge Card Conn. R/A D/R STD B/B H=1.5mm 圖號 (DWG.NO) 88990-2DXX-XXX</p> | <p>製圖 (DR) '04/03/08 Arnold</p> <p>審核 (CHKD) Warles</p> <p>核准 (APPD) Jason</p> |
| <p>⊕ MARK IS CRITICAL DIM. ⊗ MARK IS MAJOR DIM.</p> <p>表面處理 (FINISH)</p> | <p>比例 (SCALE) 單位 (UNITS) 1:1 mm</p> | <p>張數 (SHEET) 1 OF 2 SIZE A4 REV J</p> |



Top Side Option one Pad

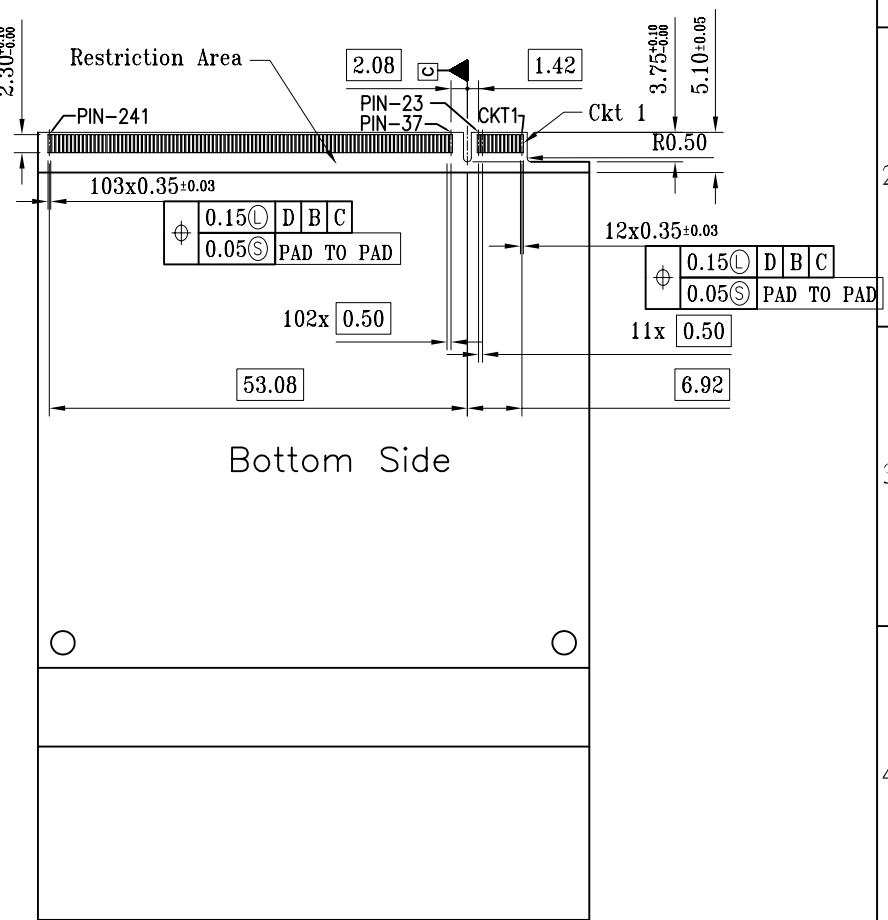


Bottom Side Option one Pad



Top Side

Restriction Area



Bottom Side

Type A Application Card PCB Layout

| | | | |
|-------------|----------------------|------|-----------|
| See Sheet 1 | 修改摘要 | 日期 | 簽名 |
| REV | REVISION DESCRIPTION | DATE | SIGNATURE |

| | | | |
|---|--|--|--|
| 一般公差 TOLERANCES X ±0.5 XX ±0.15 X ±0.25 XXX ±0.1 ANGLES ±2° | | 宏致電子股份有限公司 Aces Electronic Co.,Ltd. | |
| 檢驗尺寸標示 SYMBOLS Ⓞ INDICATE CLASSIFICATION DIMENSION Ⓢ MARK IS CRITICAL DIM. Ⓣ MARK IS MAJOR DIM. | | 品名 (TITLE) MM 230 pins 0.5mm pitch Edge Card Conn. R/A D/R STD B/B H=1.5mm 圖號 (DWG.NO) 88990-2DXX-XXX | |
| 表面處理 (FINISH) | | 比例 (SCALE) 單位 (UNITS) 1:1 mm | |
| 製圖 (DR) Arnold '04/03/08 審核 (CHKD) Warles 核准 (APPD) Jason | | 張數 (SHEET) 2 OF 2 SIZE A4 REV J | |